

\$40,000 - 10253 County Lane 2 North, Alamosa

MLS® #4881819 Listing Office MLH Realty, LLC

\$40,000

Bedroom, Bathroom, 1,742,400 sqft
Land on 40 Acres

Alamosa, Alamosa, CO

This 40 acre parcel has a brand new septic installed, survey has been done, corners marked, address assigned and ready for that beautiful home you have dreamed of! 40 acres, gorgeous views, remote, close to the Blanca Wetlands, Mt. Blanca in your back yard! Great views of the Great Sand Dunes. This property affords beautiful mountain and valley views, easy access to Alamosa via Hwy 17. Adjoining parcel also for sale! The Great Sand Dunes National Park and other San Luis Valley Recreation areas are all close to this remote and private location. Great southern exposure, located in the San Luis Valley "Pocket of Freedom". Make this your Colorado hideaway!

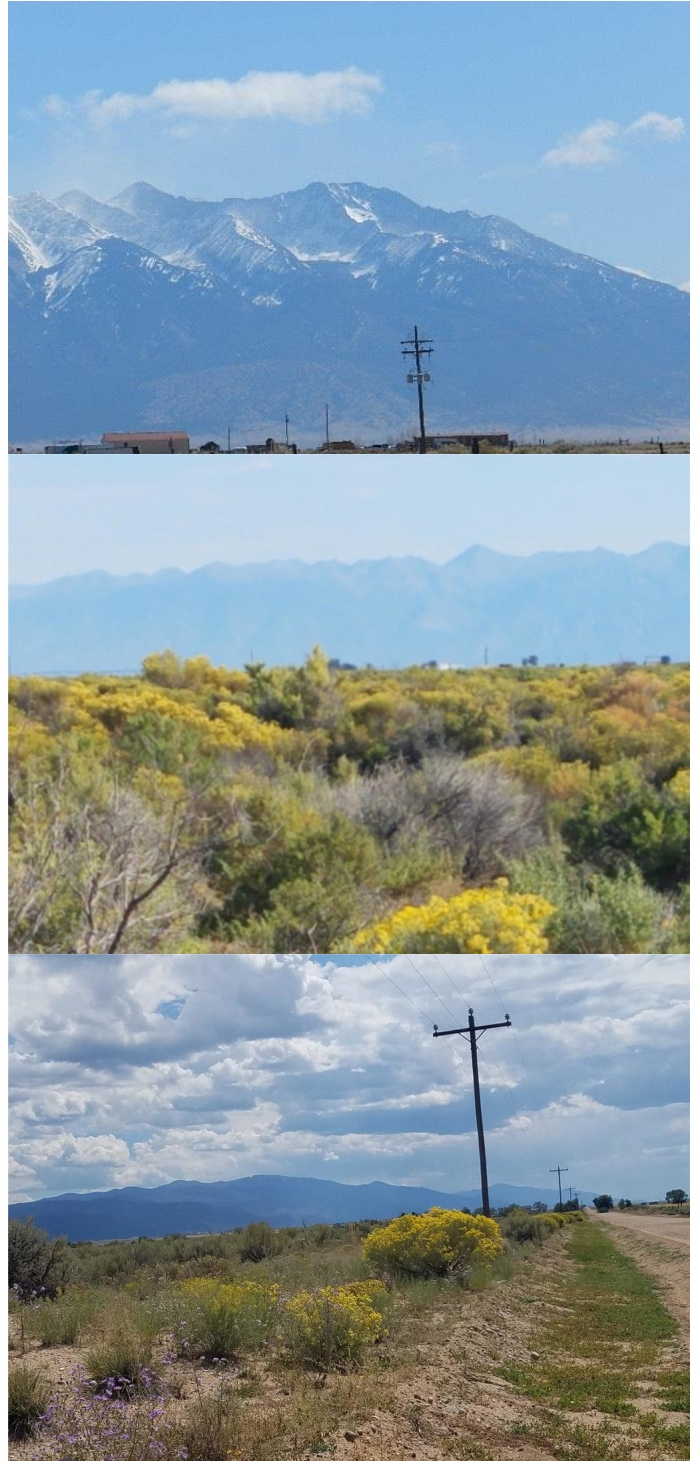


Listing Courtesy of MLH Realty, LLC

Essential Information

MLS® #	4881819
Price	\$40,000
Square Footage	1,742,400
Acres	40.00
Type	Land
Sub-Type	Land
Status	Active
Features	Corner Lot

Community Information



Address 10253 County Lane 2 North
Subdivision Alamosa
City Alamosa
County Alamosa
State CO
Zip Code 81101

Amenities

View Mountain View, Valley

Exterior

Lot Description 1742400.00

School Information

District Alamosa

Additional Information

Zoning Residential Single Family



Terms and Conditions: The content relating to real estate for sale in this Web site comes in part from the Internet Data eXchange ("IDX") program of METROLIST, INC., DBA RECOLORADO® Real estate listings held by brokers other than The Cascade Team Real Estate are marked with the IDX Logo. This information is being provided for the consumers personal, non-commercial use and may not be used for any other purpose. All information subject to change and should be independently verified.

Copyright 2019 METROLIST, INC., DBA RECOLORADO® -- All Rights Reserved 6455 S. Yosemite St., Suite 500 Greenwood Village, CO 80111 USA

Listing information last updated on September 15th, 2019 at 5:19pm PDT